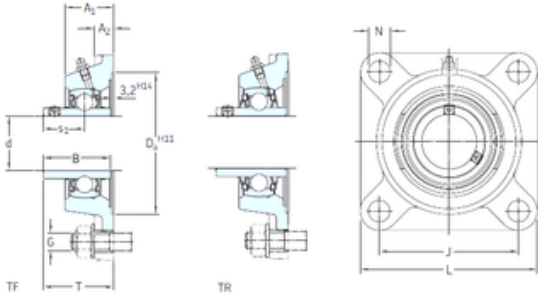




# Bearing de Mexico, S.A.

## SKF FY 50 WF bearing units

Bearing No. FY 50 WF



FY 50 WF Bearing 2D drawings and 3D CAD models

Bore Diameter	50 mm
d	50 mm
Da	125,4 mm
s1	38,1 mm
A1	43 mm
B1	62,7 mm
G	16 mm
J	111 mm
L	143 mm
N	18 mm
T	66,1 mm
A2	15 mm
Weight	2,7 Kg
Basic dynamic load rating (C)	35,1 kN
Basic static load rating (C0)	23,2 kN
Fatigue load limit (Pu)	0,98
Category	Bearings
Inventory	0.0
Manufacturer Name	SKF
Minimum Buy Quantity	N/A
UNSPSC	31171501
Weight / Kilogram	0
EAN	7316570381184
Product Group	M06110
Housing material	Cast iron
D <sub>a</sub>	125.4 mm



## Bearing de Mexico, S.A.

$D_{b1}$	107 mm
$D_{b2}$	118 mm
A	43 mm
$A_1$	15 mm
$A_3$	3.2 mm
$A_5$	29.5 mm
$B_1$	62.7 mm
$s_1$	38.1 mm
$R_G$	1/4-28 UNF
$R_1$	28.5 mm
$D_N$	6.5 mm
$SW_N$	7 mm
$G_N$	1/4-28 SAE-LT
$J_6$	129 mm
$J_7$	35.5 mm
$N_4$	4 mm
Basic dynamic load rating C	35.1 kN
Basic static load rating $C_0$	23.2 kN
Fatigue load limit $P_u$	0.98 kN
Limiting speed	4000 r/min
Mass bearing unit	2.4 kg
Thread grub screw $G_2$	M10x1
Hexagonal key size for grub screw N	5 mm
Recommended tightening torque for grub screw	16.5 N · m
Recommended diameter for attachment bolts, mm G	16 mm
Recommended diameter for attachment bolts, inch G	0.625 in
Housing	FY 510 M
Bearing	YEL 210-2F
End cover	ECY 210



**Bearing de Mexico, S.A.**