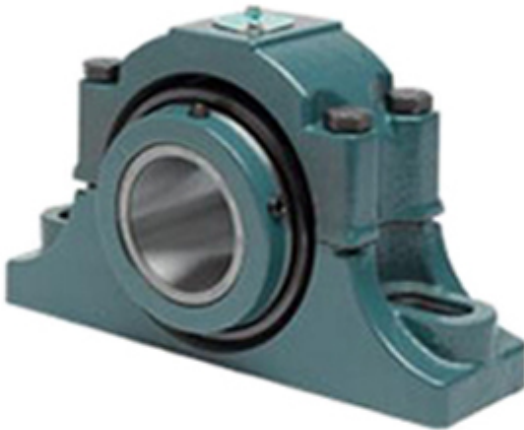




## Bearing de Mexico, S.A.



1.375 Inch | 34.925 Millimeter x 3 Inch | 76.2  
Millimeter x 1.875 Inch | 47.63 Millimeter DODGE  
P2B-EXL-106R Pillow Block Bearings

Bearing No. P2B-EXL-106R

P2B-EXL-106R Bearing 2D drawings and 3D CAD  
models

Category	Pillow Block Bearings
Inventory	0.0
Manufacturer Name	ABB MOTORS AND MECHANICAL INC
Minimum Buy Quantity	N/A
Weight	5.448
EAN	0782476587291
Product Group	M06288
Number of Mounting Holes	2
Mounting Method	Concentric Collar
Housing Style	2 Bolt Pillow Block
Rolling Element	Tapered Roller Bearing
Housing Material	Cast Iron
Expansion / Non-expansion	Non-expansion
Mounting Bolts	1/2 Inch
Relubricatable	Yes
Insert Part Number	S1U-EXL-106R
Seals	Triple Lip Contact
Housing Configuration	2 Piece Split
Inch - Metric	Inch
Other Features	Double Row   Double Collar   With Set Screw
Long Description	2 Bolt Pillow Block; 1-3/8" Bore; 1-7/8" Base to Center Height; Concentric Collar Mount; Tapered Roller



## Bearing de Mexico, S.A.

	Bearing; 5.31" Minimum Bolt Spacing; 5.94" Bolt Spacing Maximum; Relubricata
Category	Pillow Block
UNSPSC	31171511
Harmonized Tariff Code	8483.20.40.80
Noun	Bearing
Keyword String	Pillow Block
Manufacturer URL	<a href="http://www.dodge-pt.com">http://www.dodge-pt.com</a>
Manufacturer Item Number	P2B-EXL-106R
Manufacturer Internal Number	077223
Weight / LBS	12
D	3 Inch   76.2 Millimeter
Actual Bolt Center to Center	0 Inch   0 Millimeter
d	1.375 Inch   34.925 Millimeter
Nominal Bolt Center to Center	5.6 Inch   142.5 Millimeter
Bolt Spacing Minimum	5.31 Inch   134.874 Millimeter
B	1.875 Inch   47.63 Millimeter
Bolt Spacing Maximum	5.94 Inch   150.876 Millimeter