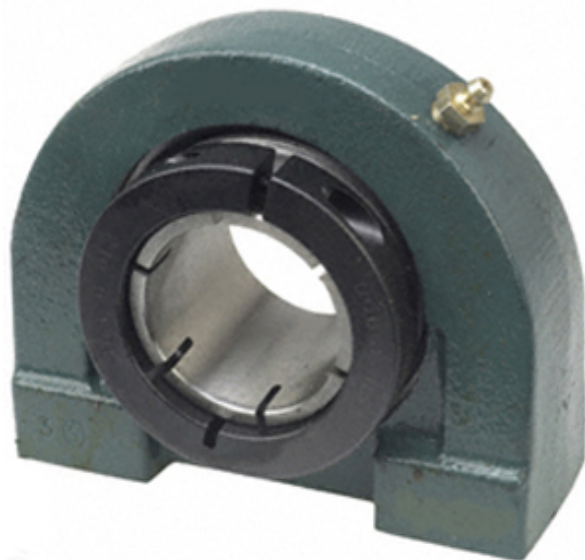




Bearing de Mexico, S.A.



1.75 Inch | 44.45 Millimeter x 2 Inch | 50.8
Millimeter x 2.125 Inch | 53.98 Millimeter DODGE
TB-DL-112 Pillow Block Bearings

Bearing No. TB-DL-112

Category	Pillow Block Bearings
Inventory	0.0
Manufacturer Name	ABB MOTORS AND MECHANICAL INC
Minimum Buy Quantity	N/A
Weight	3
EAN	0782475894765
Product Group	M06110
Number of Mounting Holes	2
Mounting Method	Concentric Collar
Housing Style	2 Bolt Tap Base Pillow Block
Rolling Element	Ball Bearing
Housing Material	Cast Iron
Expansion / Non-expansion	Non-expansion
Mounting Bolts	1/2 Inch
Relubricatable	Yes
Insert Part Number	INS-DL-112
Seals	Single Lip Contact
Housing Configuration	1 Piece Solid
Inch - Metric	Inch
Other Features	Single Row Normal Duty Wide Inner Race
Long Description	2 Bolt Tap Base Pillow Block; 1-3/4" Bore; 2-1/8" Base to Center Height; Concentric Collar Mount;

TB-DL-112 Bearing 2D drawings and 3D CAD models



Bearing de Mexico, S.A.

	Ball Bearing; Relubricatable; Cast Iron; Single Lip Contact; Non-expansion
Category	Pillow Block
UNSPSC	31171511
Harmonized Tariff Code	8483.20.40.40
Noun	Bearing
Keyword String	Pillow Block
Manufacturer URL	http://www.dodge-pt.com
Manufacturer Item Number	TB-DL-112
Manufacturer Internal Number	128754
Weight / LBS	6.6
Bolt Spacing Minimum	0 Inch 0Millimeter
B	2.125 Inch 53.98 Millimeter
Bolt Spacing Maximum	0 Inch 0Millimeter
d	1.75 Inch 44.45 Millimeter
D	2 Inch 50.8 Millimeter
Nominal Bolt Center to Center	3.8 Inch 97 Millimeter
Actual Bolt Center to Center	3.8 Inch 96Millimeter