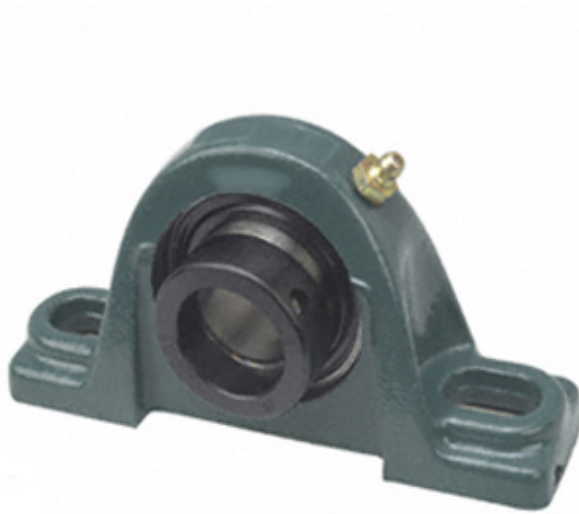




Bearing de Mexico, S.A.



1.125 Inch | 28.575 Millimeter x 1.906 Inch |
48.42 Millimeter x 1.625 Inch | 41.275 Millimeter
DODGE P2B-SXR-102 Pillow Block Bearings

Bearing No. P2B-SXR-102

P2B-SXR-102 Bearing 2D drawings and 3D CAD models

Category	Pillow Block Bearings
Inventory	12.0
Manufacturer Name	ABB MOTORS AND MECHANICAL INC
Minimum Buy Quantity	N/A
Weight	1.23
EAN	0782475119240
Product Group	M06110
Number of Mounting Holes	2
Mounting Method	Eccentric Collar
Housing Style	2 Bolt Pillow Block
Rolling Element	Ball Bearing
Housing Material	Cast Iron
Expansion / Non-expansion	Non-expansion
Mounting Bolts	1/2 Inch
Relubricatable	Yes
Insert Part Number	INS-SXR-102
Seals	Single Lip Contact
Housing Configuration	1 Piece Solid
Inch - Metric	Inch
Other Features	Single Row Normal Duty Wide Inner Race
Long Description	2 Bolt Pillow Block; 1-1/8" Bore; 1-5/8" Base to Center Height; Eccentric Collar Mount; Ball Bearing; 4-1/4"



Bearing de Mexico, S.A.

	Minimum Bolt Spacing; 5" Bolt Spacing Maximum; Relubricatable; Cast Iro
Category	Pillow Block
UNSPSC	31171511
Harmonized Tariff Code	8483.20.40.40
Noun	Bearing
Keyword String	Pillow Block
Manufacturer URL	http://www.dodge-pt.com
Manufacturer Item Number	P2B-SXR-102
Manufacturer Internal Number	131807
Weight / LBS	2.7
B	1.625 Inch 41.275 Millimeter
Actual Bolt Center to Center	0 Inch 0Millimeter
d	1.125 Inch 28.575 Millimeter
Nominal Bolt Center to Center	4.6 Inch 118 Millimeter
D	1.906 Inch 48.42 Millimeter
Bolt Spacing Minimum	4.25 Inch 107.95Millimeter
Bolt Spacing Maximum	5 Inch 127Millimeter