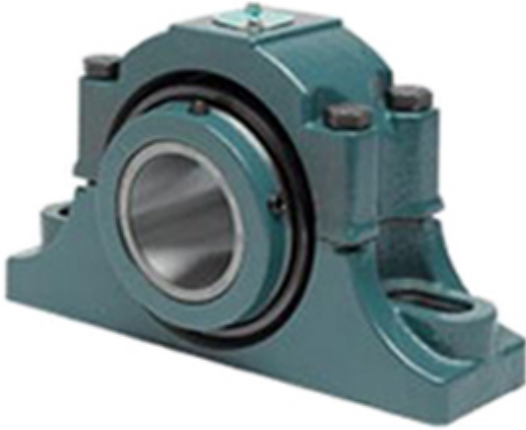




## Bearing de Mexico, S.A.



3 Inch | 76.2 Millimeter x 4.5 Inch | 114.3  
Millimeter x 3.125 Inch | 79.38 Millimeter DODGE  
P2B-EXL-300R Pillow Block Bearings

Bearing No. P2B-EXL-300R

P2B-EXL-300R Bearing 2D drawings and 3D CAD  
models

Category	Pillow Block Bearings
Inventory	0.0
Manufacturer Name	ABB MOTORS AND MECHANICAL INC
Minimum Buy Quantity	N/A
Weight	19.522
EAN	0782476587451
Product Group	M06288
Number of Mounting Holes	2
Mounting Method	Concentric Collar
Housing Style	2 Bolt Pillow Block
Rolling Element	Tapered Roller Bearing
Housing Material	Cast Iron
Expansion / Non-expansion	Non-expansion
Mounting Bolts	3/4 Inch
Relubricatable	Yes
Insert Part Number	S1U-EXL-300R
Seals	Triple Lip Contact
Housing Configuration	2 Piece Split
Inch - Metric	Inch
Other Features	Double Row   Double Collar   With Set Screw
Long Description	2 Bolt Pillow Block; 3" Bore; 3-1/8" Base to Center Height; Concentric Collar Mount; Tapered Roller



## Bearing de Mexico, S.A.

	Bearing; 8.06" Minimum Bolt Spacing; 10" Bolt Spacing Maximum; Relubricatable; C
Category	Pillow Block
UNSPSC	31171511
Harmonized Tariff Code	8483.20.40.80
Noun	Bearing
Keyword String	Pillow Block
Manufacturer URL	<a href="http://www.dodge-pt.com">http://www.dodge-pt.com</a>
Manufacturer Item Number	P2B-EXL-300R
Manufacturer Internal Number	077239
Weight / LBS	43
D	4.5 Inch   114.3 Millimeter
Bolt Spacing Minimum	8.06 Inch   204.724 Millimeter
Nominal Bolt Center to Center	9 Inch   229 Millimeter
Actual Bolt Center to Center	0 Inch   0 Millimeter
Bolt Spacing Maximum	10 Inch   254 Millimeter
B	3.125 Inch   79.38 Millimeter
d	3 Inch   76.2 Millimeter